

HUSKIE HYDRAULIC WIRE ROPE CUTTER



Part No. 16-140
Huskie Wire Rope
Cutter

Part No. 16-141W
Replacement Blade



180° rotating head
with flip-top latch and
guillotine-style jaw

Product Description

This **Huskie S-Series hydraulic cutting tool** cuts anything from guy wire* to anchor rod and most overhead and underground cables. It is ideal for cutting elevator wire rope up to 3/4" in diameter.

This cutter is portable, lightweight, and made to last years under the toughest field conditions. It's made of high-grade steel and coated with black zinc oxide for corrosion resistance.

The rubber handle grips make for comfortable operation, while the flip-top latch opens the jaw to easily accept cables and wires. The head rotates up to 180° to facilitate easy wire positioning and operator leverage.

***Note: Do not use this tool to cut EHS guy wire.**

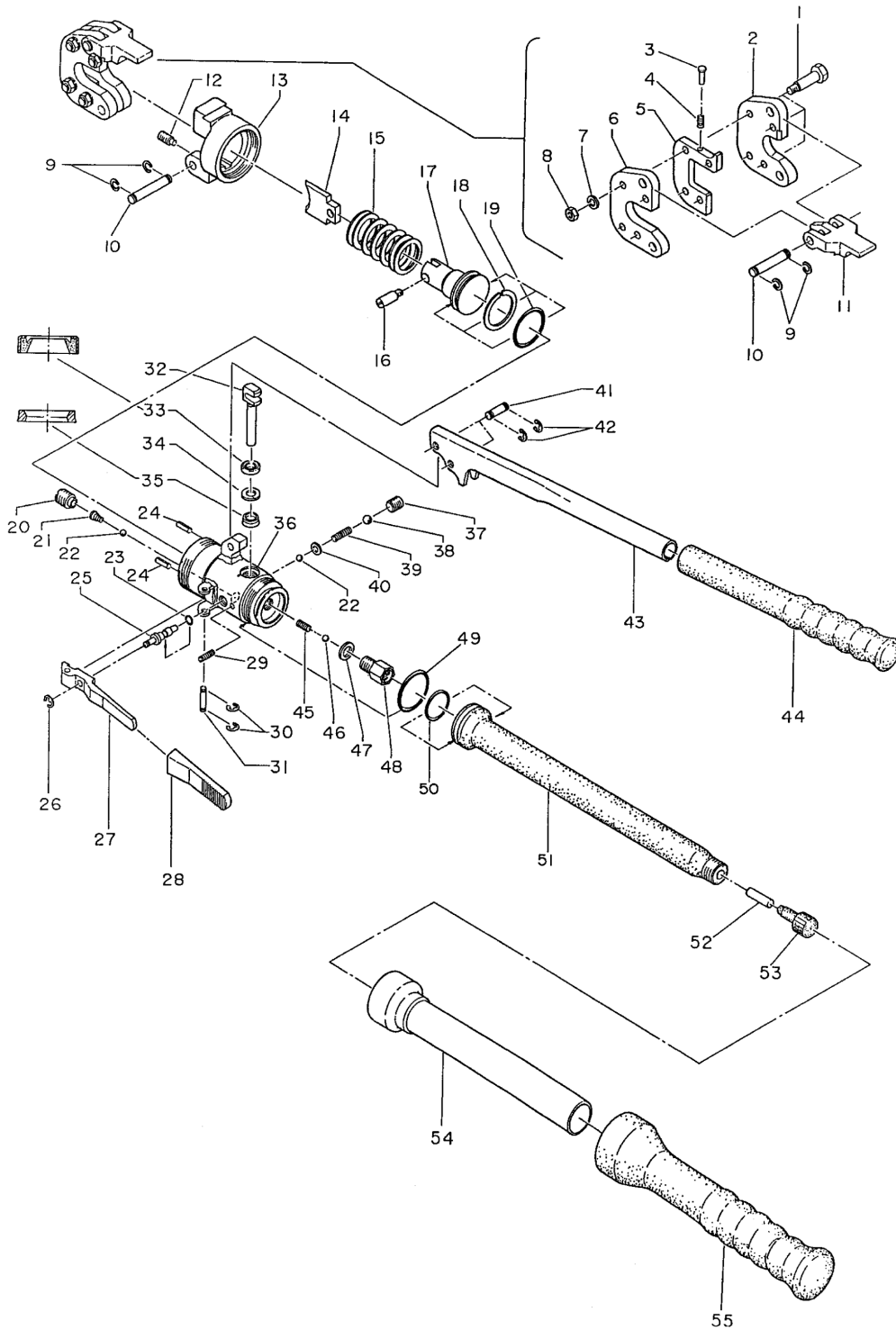
Key Features

- Lightweight and portable
- Replaceable blades
- Black zinc oxide coating for corrosion resistance
- Guillotine-style cutting jaw performs better with less jamming vs. shear-type cutting jaws

Part No.	Description
16-140	Huskie #JSH-20 Cable Cutter
16-141-W	Replacement Blade

Specifications	
Output	4.4 tons
Weight	6 lbs
Size	15" long
Jaw Opening	0.75" for up to 3/4" (20mm) rope

PARTS DIAGRAM



Revision: 02 | 09/2023 | Document No.: Specifications_16-140

PARTS LIST

No.	Description	Code	Qty
1	Shoulder Bolt	16-03B	4
2	Head Shear	20-02	1
3	Slide Pin	20-71	1
4	Spring (144)	85-37	1
5	Spacer	20-70	1
6	Main Head	20-04	1
7	M6 Lock Washer	16-02	4
8	M6 Hex Nut	16-01	4
9	CE-8 Snap Ring	16-09	4
10	Pin (46)	16-10	2
11	Latch	16-11	1
12	M5 X 10 Screw (DP)	55A-11	1
13	Body Head	20A-01	1
14	Blade	20-07	1
15	Spring (75)	16-17	1
16	Blade Screw	16-19	1
17	Ram	16-21	1
18	P-29 Back-Up Ring (BC)	16-22	1
19	P-29 O-Ring	16-23	1
20	Valve Screw (3)	16-24	1
21	Spring (2)	16-25	1
22	7/32" Ball	16-26	2
23	P-3 O Ring	16-36	1
24	2.5 x 10 Dowel Pin (D)	40A-03	2
25	Release Valve Stem	16-35	1
26	E-3.2 Snap Ring	16-33	1
27	Release Lever	20-08	1
28	Release Lever Insulation	20-09	1
29	Spring (77)	16-37	1
30	E-2.5 Snap Ring	16-28	2
31	Pin (26)	16-27	1
32	Pump Piston	16-47	1

No.	Description	Code	Qty
33	VC8 Oil Seal	40A-05	1
34	P-8 Back-Up Ring (BC)	85-33	1
35	PS-8 Pent Seal	16-44	1
36	Body	20A-02	1
37	M10 X 10 Screw (FP)	16-41	1
38	9/32" Ball	16-40	1
39	Spring (76)	16-39	1
40	M3 Flat Washer	16-38	1
41	Pin (47)	16-29	2
42	CE-6 Snap Ring	16-30	4
43	Pump Handle	16-31	1
44	Pump Handle Grip	20-10	1
45	Spring (4)	16-48	1
46	3/16" Ball	16-49	1
47	Copper Gasket (6)	16-50	1
48	Suction Valve Screw Ass'y	16-51	1
49	S-36 O-Ring	85-51	1
50	P-26 O-Ring	16-55	1
51	Oil Reservoir (4)	20A-03	1
52	Magnet	ROB-25	1
53	Reservoir Cap	410-55	1
54	Body Handle	16-63	1
55	Body Handle Grip	20-11	1

Revision: 02 | 09/2023 | Document No.: Specifications_16-140